

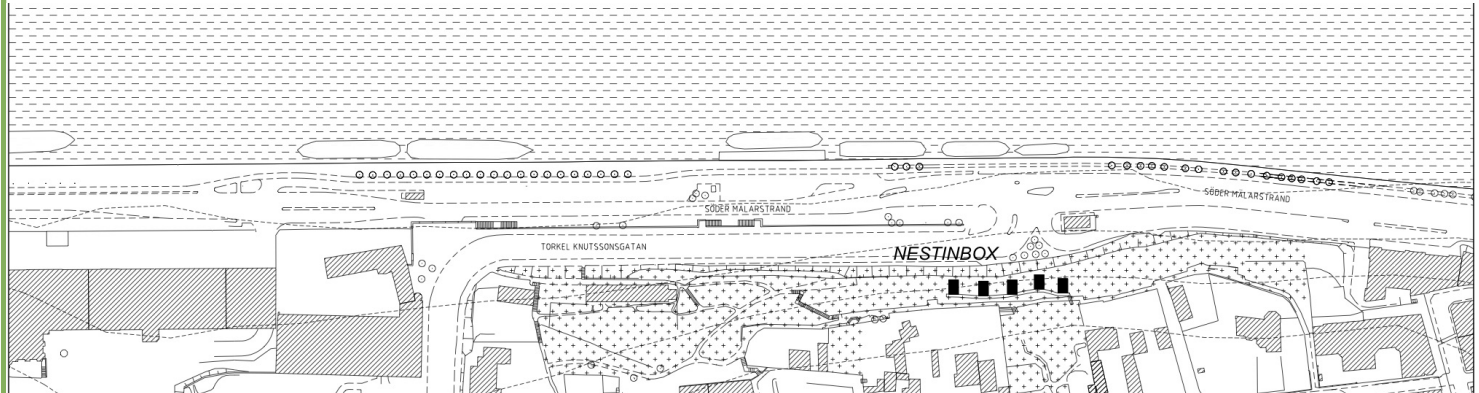
NESTINBOX

what?

Nestinbox is a small, smart, sustainable house mounted on “vertical ground”.

The carcass is made entirely of CLT and the wooden box is mounted on a rock wall in a hidden steel construction.

You preferably build in a cluster of 3 boxes or more.



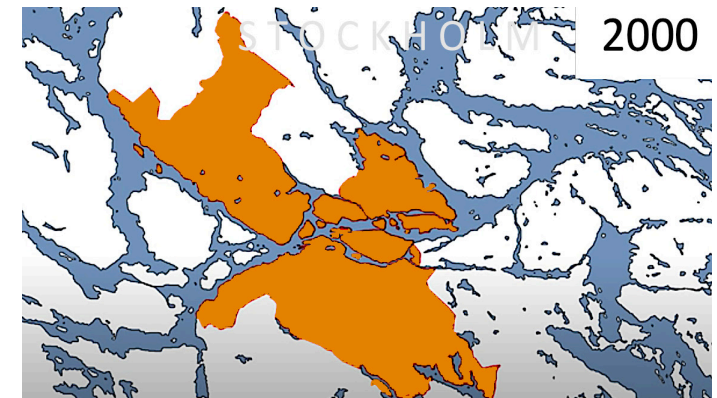
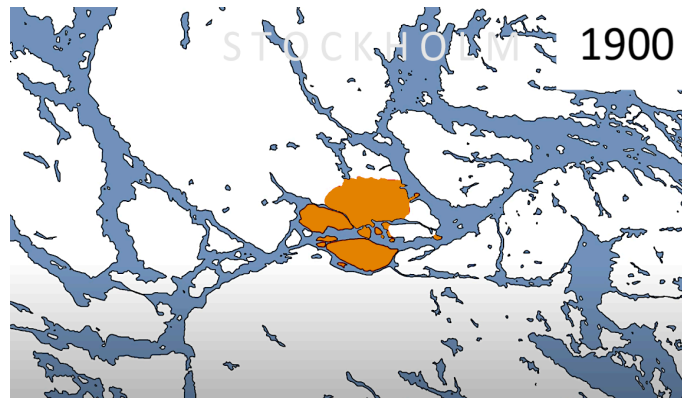
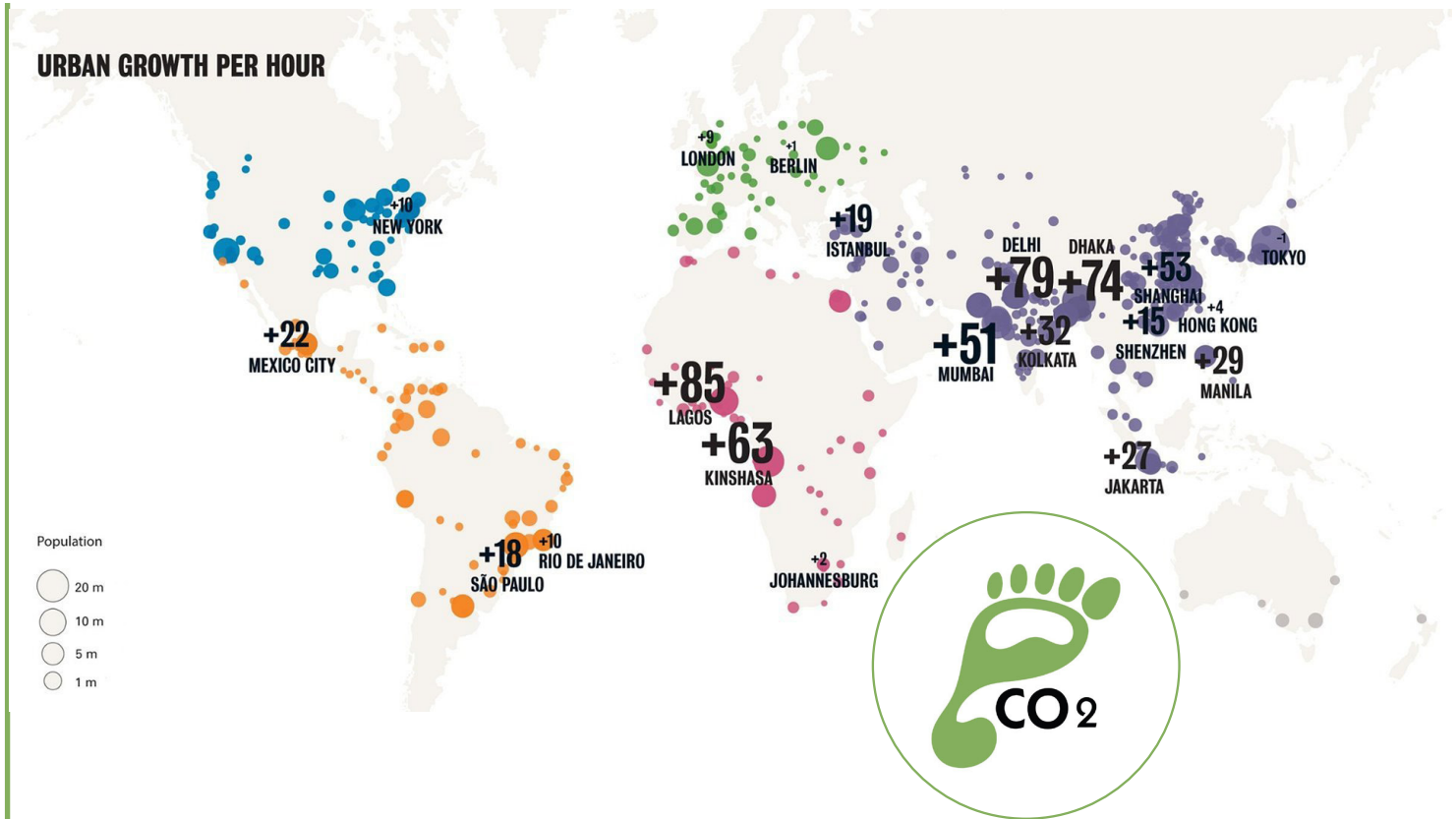
NESTINBOX

why?

Urban growth is constantly increasing.

In order to get room for everyone in the cities we are continuously densifying by building higher, AND wider.

The human ecological footprint gets bigger and bigger.



NESTINBOX

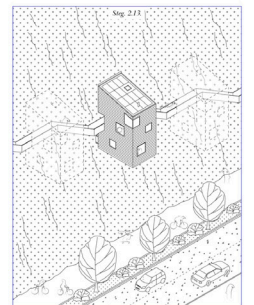
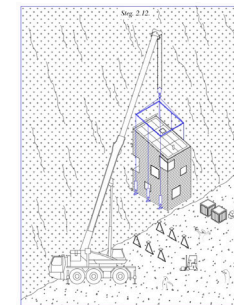
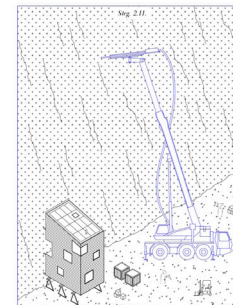
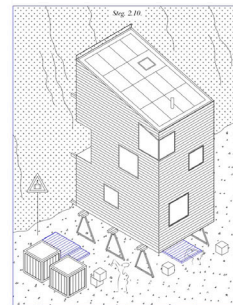
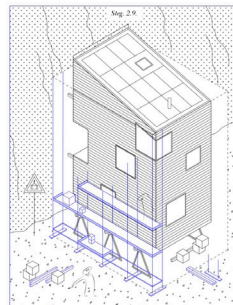
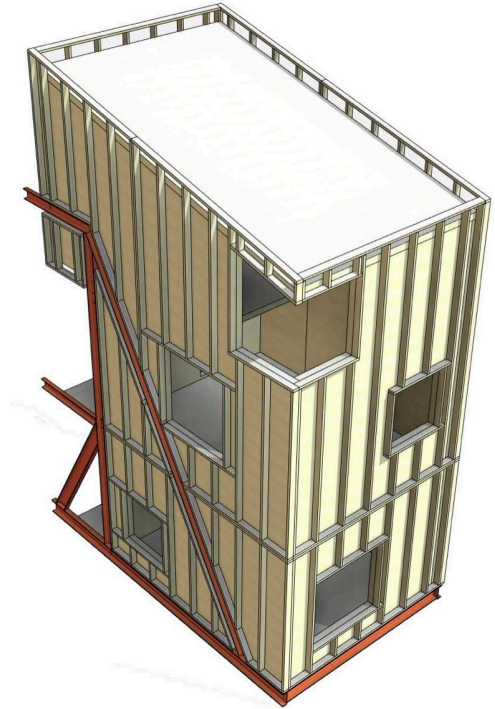
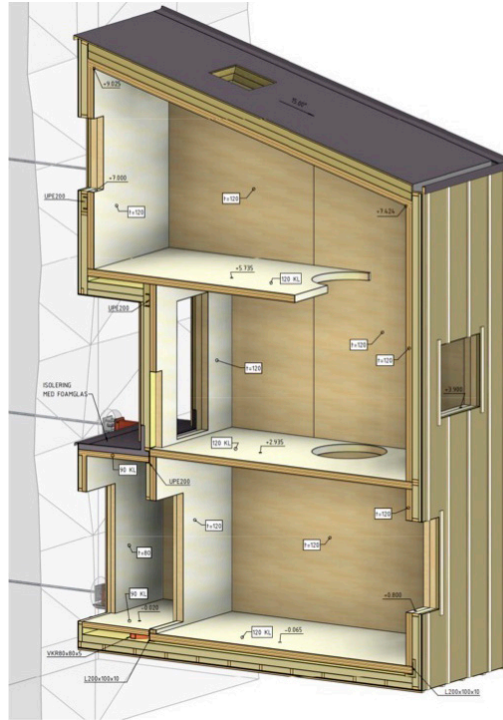
how?

But You don't always have to build on the ground.

A Nestinbox is built above.

A prefabricated, isolated wooden box is placed into a steel construction.

The whole structure is lifted up with a big crane and the attaching points are mounted into predrilled holes in the rock wall.

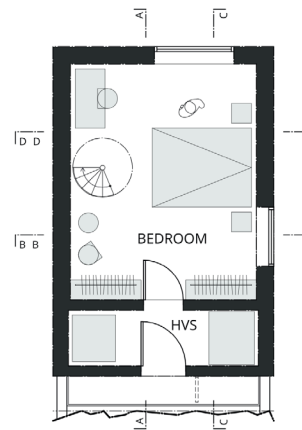
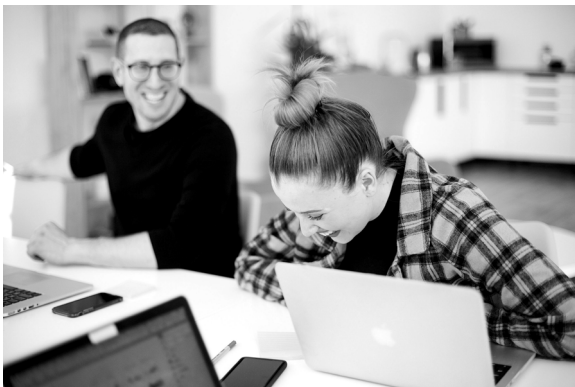


NESTINBOX

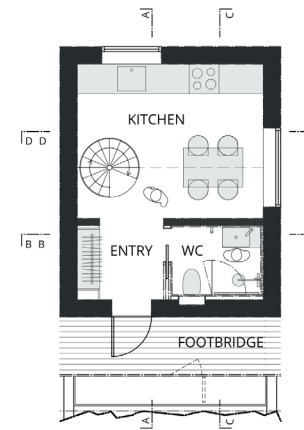
who?

Nestinbox is planned for two persons, as a permanent house or as a part of a hotel concept.

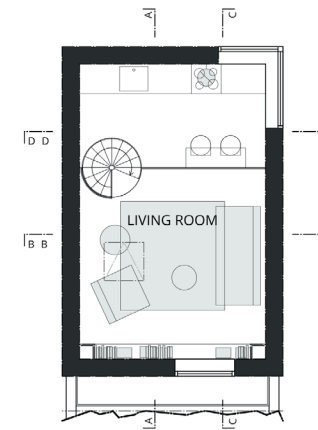
The smart layout of 48,5 m² is including an entrance hall, a small bathroom, a kitchen, a living room, a bedroom with space for a desk (or a cot), and a room for heating, ventilation and sanitary supply.



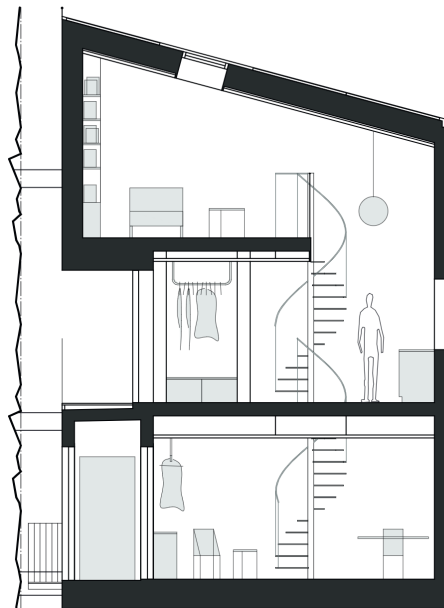
FIRST FLOOR



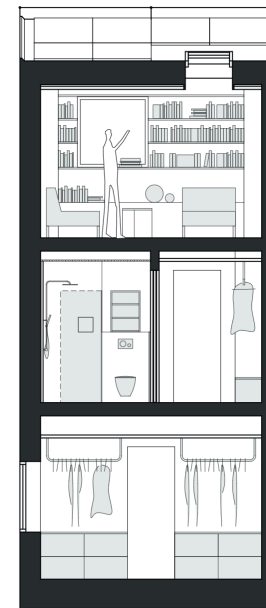
SECOND FLOOR/ENTRANCE FLOOR



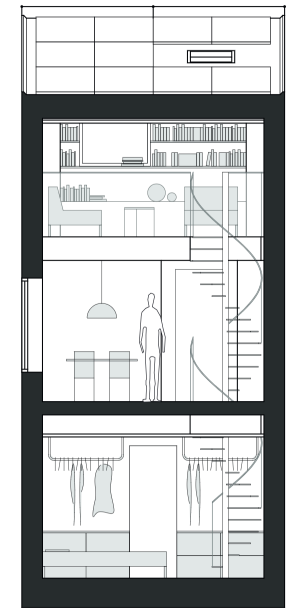
THIRD FLOOR/MEZZANINE



SECTION A-A



SECTION B-B



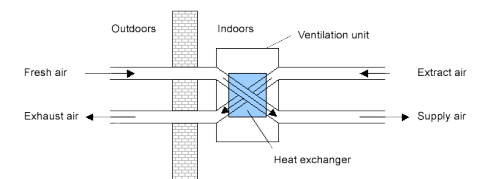
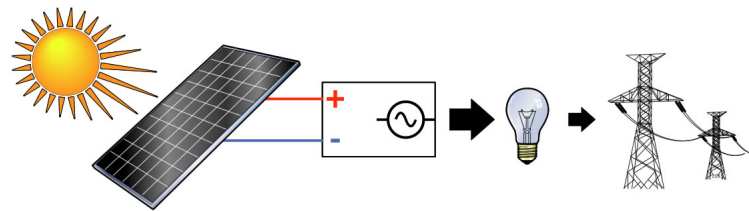
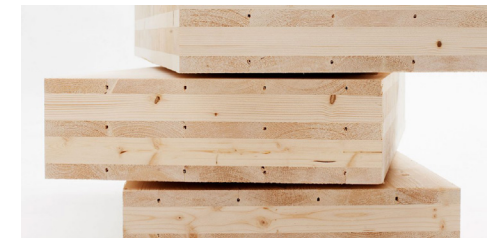
SECTION D-D

NESTINBOX

CO₂e?

Nestinbox is planned to contribute as little as possible to emissions of CO₂-equivalents.

The supporting frame is CLT, the isolation is wood fibre and the structure for mounting the box on the rock is “green steel”, not yet available, but it will be soon!



NESTINBOX



Contacts and more info?
Please visit our website:
<https://nestinbox.se/en/home-5/>

Let your thoughts have wings and imagine a life living like a bird!

